



technologies corp.
 > WEINSCHTEL

Model 257

High Power, N or SMK Connectors

Conduction Cooled



Features

- /// Precision Connectors with high temperature support beads.
- /// Designed to meet environmental requirements of MIL-DTL-3933.
- /// 10 Kilowatts peak, Conduction Cooled
- /// Wireless Applications - Optimized for use in the communications bands.

Specifications

NOMINAL IMPEDANCE: 50 Ω

FREQUENCY RANGE: dc to 6.0 GHz

MAXIMUM DEVIATION OVER FREQUENCY:	
Nominal ATTN (dB)	Deviation (dB)
10, 20, 30, 40	± 1.00

MAXIMUM SWR:	
Frequency (GHz)	SWR
dc - 2.5	1.10
2.5 - 6	1.15

3rd ORDER INTERMODULATION (257-XX-XX-LIM ONLY): Reflected Levels (IM3), -100 & Through Levels (IM3), -110 dBc with two input signals @ 869 MHz and 891 MHz with average carrier power levels of +43 dBm each.

POWER RATING: 250 watts **average (unidirectional)**, 10 kilowatt **peak** (5 μsec pulse width; 1.25% duty cycle) with case temperature held within **100 °C maximum** with appropriate conductive heat sink. Maximum power rating into output port is 40 watts average.

TEMPERATURE COEFFICIENT: <0.0004 dB/dB/°C

TEMPERATURE RANGE: -55 to 100°C (case temperature)

Fixed Coaxial Attenuators

dc to 6.0 GHz
 250 Watts



TEST DATA: Swept data plots of attenuation and SWR from 50 MHz to 6 GHz.

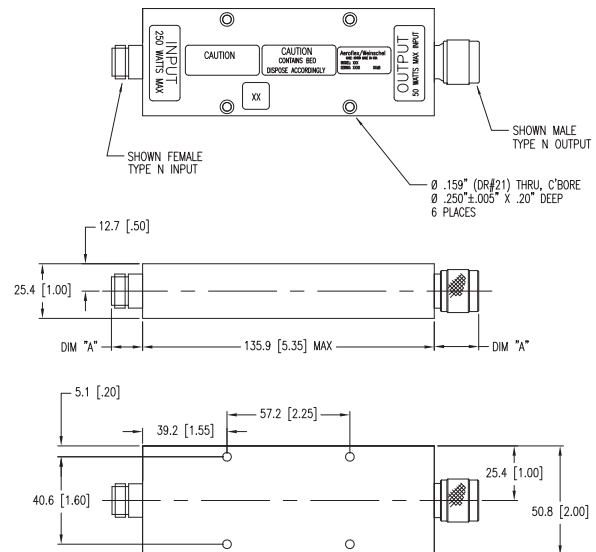
CONNECTORS: Type N connectors per MIL-STD-348 interface dimensions - mate nondestructively with MIL-C-39012 connectors. SMK (2.92mm) connectors mate with SMA, 3.5mm and other 2.92mm connectors.

Options	Description	Options	Description
1	SMK Female	3	Type N Female
2	SMK Male	4	Type N Male

CONSTRUCTION: Aluminum alloy body, stainless steel connectors; gold plated beryllium copper contacts.

WEIGHT: 500 g (17.6 oz.) maximum

PHYSICAL DIMENSIONS:

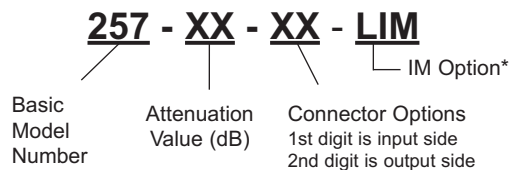


Connector	DIM A	Connector	DIM A
N Male	22.9 (0.90)	2.92mm Male	14.0 (0.55)
N Female	15.0 (0.59)	2.92mm Female	12.7 (0.50)

NOTE: All dimensions are given in mm (inches) and are maximum, unless otherwise specified.

MODEL NUMBER DESCRIPTION:

Example:



* Add -LIM for Low Intermodulation option.