

Operation Manual

API Weinschel USB Control Center Software (P/N 189-164)

This documentation may not be reproduced in any form, for any purpose unless authorized in writing by API Weinschel, Inc.

© API Weinschel, Inc.
Frederick, Maryland
2012 - 2015

TABLE OF CONTENTS

- 1. GENERAL INFORMATION..... 3
 - 1-1. PURPOSE & SCOPE 3
 - 1-2. DESCRIPTION 3
 - 1-3. RELATED MANUALS..... 3
 - 1-4. ABBREVIATIONS & ACRONYMS..... 3
- 2. SYSTEM REQUIREMENTS 3
- 3. INSTALLATION..... 3
- 4. OPERATION 4
 - 4-1. GETTING CONNECTED..... 4
 - 4-2. BASIC OPERATION 4
 - 4-3. CONFIGURING AND CONDUCTING A FADING OR HANDOVER TEST 5
 - 4-4. ADDITIONAL FUNCTIONALITY 5
- 5. CONTACTING API WEINSCHEL, INC..... 7
- 6. API WEINSCHEL, INC. WARRANTY 7

1. GENERAL INFORMATION:

1-1 PURPOSE & SCOPE: This manual contains setup and operation information for the API Weinschel USB Control Center Software, P/N 189-164. The manual also provides instructions for configuring and conducting a Fading or Handover Test as well as advanced tools and additional functionality

1-2 DESCRIPTION: API Weinschel USB Control Center Software (AUCS) is to be used in conjunction with the operation of the API Weinschel 4205 series of digital attenuators. The AUCS will allow the user setup, control and perform test and measurements using these digital attenuators over standard USB 2 communication interface.

1-3. RELATED MANUALS: The following manuals contain information that may be used in conjunction with this manual to operate this software.

<u>Manual</u>	<u>Title</u>
IM-612	Installation Manual, Model 4305, Digital Attenuator

1-4. ABBREVIATIONS AND ACRONYMS: The following list contains abbreviations used throughout this manual. Abbreviations and acronyms that are not listed conform to MIL-STD-12D.

AUCS	API Weinschel USB Control Center Software
TBD	To Be Determined

2. SYSTEM REQUIREMENTS:

Minimum requirements for operation of the API Weinschel Control Center Software:

1. Microsoft Windows XP or newer
2. Microsoft .net Framework 3.5.1 or higher
3. 1024x768 or higher resolution monitor
4. Intel Pentium 4 Processor or later and 1 GB RAM

3. INSTALLATION:

Perform the following to install the Attenuator Control Center Software:

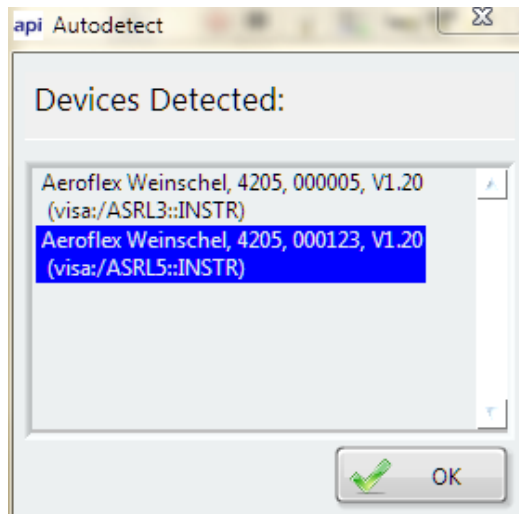
1. Run "setup.exe" from the appropriate downloaded folder or CD.
2. Follow wizard as prompted to install the API Weinschel USB Control Software and the LabVIEW™ runtime.
3. Connect your USB attenuator to your system. If prompted to locate the driver, choose "Have Disk" and then select either the folder you installed the control software to, or the CD.

4. OPERATION:

4-1 GETTING CONNECTED

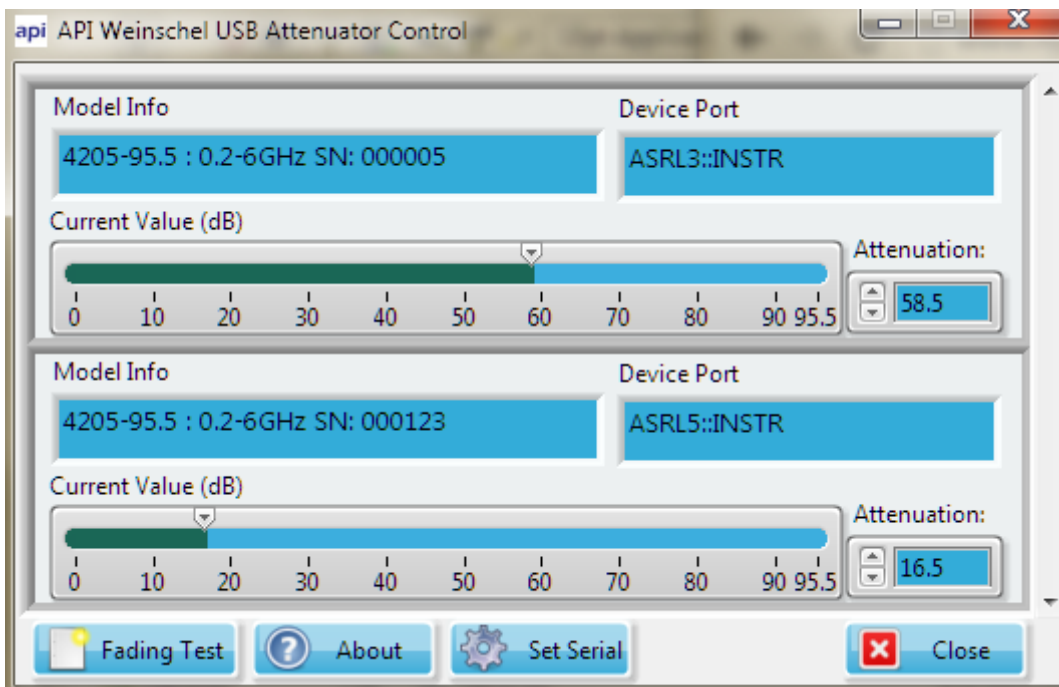
The following provides instructions for establishing a connection between terminal or computer and the programmable attenuation unit:

1. Open “API Weinschel USB Control Software” from the Start Menu
2. Choose the correct device(s) from the list and press “OK”



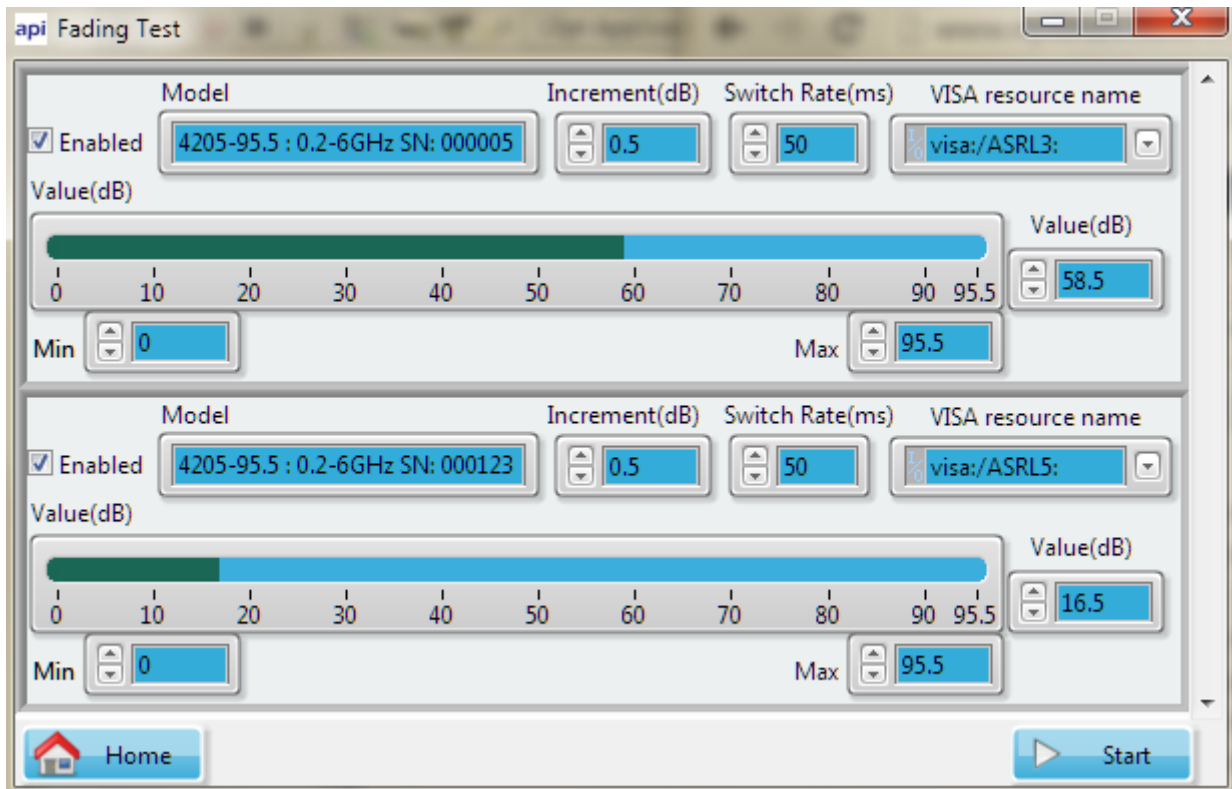
4-2. BASIC OPERATION

1. The attenuator may be adjusted by clicking on the slide bar or typing a number into the control box.



4-3. CONFIGURING AND CONDUCTING A FADING OR HANDOVER TEST

1. From the Control Center front panel select "Fading Test":
2. The fading test configuration window will appear:



The system automatically determines the allowed limits for each parameter. The attenuator has the following parameters:

Min: The lower limit of the test.

Max: The upper limit of the test.

Increment: The amount to increment by. Select a negative number to initially decrease in attenuation.

Switch Rate: The frequency at which the attenuator is to be switched. Please note that most attenuators have both a switching time and a maximum cycle rate. Therefore the program has the following restrictions:

- Switch rate cannot exceed the maximum cycle rate (200 ms for most relay based attenuators)
- 20 ms minimum for any attenuator

3. Select the Test Mode:

Loop: Continually loop through the selected test profile. The increment is reversed each time an attenuator hits its limit.

Single: Performs a single sweep simultaneously. Each attenuator stops at the first limit it reaches.

4. Press "Start" to begin the test.

4-4. ADDITIONAL FUNCTIONALITY

Defining a Serial Number

1. From the main menu select “Set Serial”

VISA resource name	Model	Serial
visa:/ASRL3::INSTR	4205-95.5	000005
visa:/ASRL5::INSTR	4205-95.5	000123

OK

2. Enter your serial number and press “OK.”

Note: In order to connect multiple attenuators simultaneously, each must have a unique serial number assigned. Windows will not recognize the new serial number until the attenuator is reconnected and the software is restarted.

5. CONTACTING API WEINSCHEL, INC.:

In the event of a malfunction, contact API Weinschel. An apparent malfunction of an instrument or component may be diagnosed over the phone by first contacting the Customer Service Department at API Weinschel. DO NOT send the instrument or component back to the factory without prior authorization. When it is necessary to return an item, state the symptoms, catalog and type number of the instrument or component, and date of original purchase. Also write the Company name and your name and phone number on a card and tape the card to the item returned. Contact API Weinschel Customer Service Department as follows:

Via mail: API Weinschel, Inc.
5305 Spectrum Drive
Frederick, MD 21703-7362
U.S.A.

Via Telefax: 301-846-9116

Via Phone: Call TOLL FREE 800-638-2048
Toll call # 301-846-9222

Via Website: weinschel.apitech.com

Via e-mail: weinschel-sales@apitech.com

6. API WEINSCHEL, INC. WARRANTY:

PRODUCTS - API Weinschel, Inc. warrants each product it manufactures to be free from defects in material and workmanship under normal use and service anywhere in the world. API Weinschel only obligation under this Warranty is to repair or replace, at its plant, any product or part thereof that is returned with transportation charges prepaid to API Weinschel by the original purchaser within ONE YEAR from the date of shipment.

The foregoing Warranty does not apply in API Weinschel sole opinion, to products that have been subject to improper or inadequate maintenance, unauthorized modifications, misuse, or operation outside the environmental specifications for the product.

SOFTWARE PRODUCTS- API Weinschel, Inc. software products are supplied without representation or Warranty of any kind. API Weinschel, therefore, assume no responsibility and will not accept liability (consequential or otherwise) arising from the use of program materials, disk, or tape.

The Warranty period is controlled by the Warranty document furnished with each product and begins on the date of shipment. All Warranty returns must be authorized by API Weinschel prior to their return.

API Weinschel Quality System Certified to:



AUCS Software (IM-611) Revision Record

REVISION	DATE	DESCRIPTION	APPLICABLE SERIAL NUMBERS
A	3-22-13	ERN 13-043: Initial Issue	All Versions
B	11-26-15	ECN 15-319: Company Name and Logo change to API Weinschel and update screen captures.	Version E